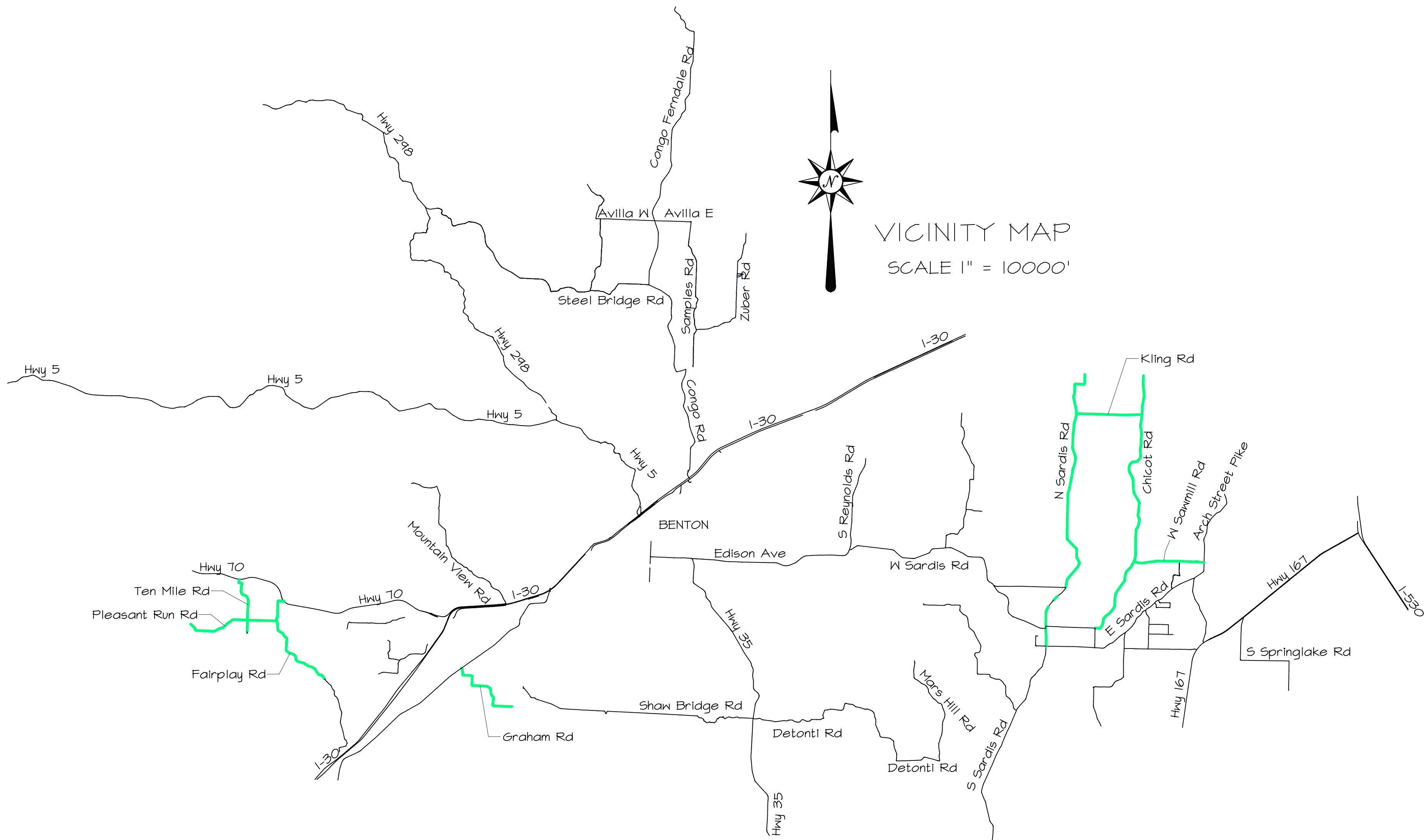


# STORM PIPE REPLACEMENTS SOUTH SALINE COUNTY ROADS

## TABLE OF CONTENTS:

COVER SHEET	
SHEET 1	SOUTH SALINE COUNTY STORM PIPE REPLACEMENT LOCATION MAP
SHEET 2	SOUTH SALINE COUNTY STORM PIPE REPLACEMENT/ INSTALLATION SCHEDULE AND COST WORK SHEET
SHEET 3	CHICOT & KLING ROADS PIPE REPLACEMENT PLAN
SHEET 4	CHICOT ROAD CONT. AND N. SARDIS PIPE REPLACEMENT PLAN
SHEET 5	CHICOT ROAD CONT. AND W. SAWMILL ROADS PIPE REPLACEMENT PLAN
SHEET 6	CHICOT ROAD CONT. PIPE REPLACEMENT PLAN
SHEET 7	N. SARDIS ROAD ROAD PIPE REPLACEMENT PLAN
SHEET 8	GRAHAM ROAD PIPE REPLACEMENT PLAN
SHEET 9	FAIRPLAY ROAD AND PLEASANT RUN ROAD AND TEN MILE ROAD PIPE REPLACEMENT PLAN
SHEET 10	TYPICAL SECTIONS FOR PIPE REPLACEMENTS SOUTH SALINE COUNTY ROADS



- GENERAL SITE WORK NOTES:
1. THE CONTRACTOR IS REQUIRED TO CALL "ARKANSAS UTILITY PROTECTION SERVICES" (ARK-UPS) FOR LOCATION OF ALL UTILITIES PRIOR TO COMMENCEMENT OF ANY EXCAVATION.
  2. THE CONTRACTOR SHALL COORDINATE WITH EACH UTILITY COMPANY PRIOR TO ANY EXCAVATION. ANY DAMAGE TO UTILITY LINES CAUSED BY THE CONTRACTOR SHALL BE REPAIRED AT THE CONTRACTORS EXPENSE. THE CONTRACTOR SHALL VERIFY THE HORIZONTAL AND VERTICAL ALIGNMENT OF EXISTING UTILITIES BEFORE STARTING REMOVAL OF EXISTING STORM PIPE.
  3. CONTRACTOR SHALL COMPLY WITH ALL RULES AND REGULATIONS TO MAINTAIN A VIABLE TRENCH SAFETY SYSTEM AT ALL TIMES (IN ACCORDANCE WITH "OSHA" 29 CFR PART 1926).
  4. THE CONTRACTOR SHALL MAINTAIN SAFE TRAFFIC CONTROL DURING CONSTRUCTION.
  5. THE CONTRACTOR SHALL BRING BACK TO GRADE ANY AREA OF GRAVEL SETTLEMENT.
  6. THE CONTRACTOR SHALL CONTROL EROSION ON THE SITE. ALL DISTURBED AREAS NOT TO BE COVERED WITH GRAVEL, ROCK OR ASPHALT SHALL BE SEEDED, FERTILIZED, AND MULCHED. THE SITE SHALL BE GRADED TO MAINTAIN POSITIVE DRAINAGE DURING CONSTRUCTION. WATER SHALL NOT BE ALLOWED TO POND.

REVISIONS:	

SALINE COUNTY ROAD DEPARTMENT	DATE: 12/11/17
	BY: JOHN W.
	COVER SHEET
STORM PIPE REPLACEMENT SOUTH SALINE COUNTY ROADS	
HORIZ. SCALE: AS SHOWN	







SOUTH SALINE COUNTY  
STORM PIPE INSTALLATION  
SCHEDULE AND COST WORK SHEET

PIPE #	NORTH*	EAST*	ROAD NAME	ROAD STA.	PIPE SIZE/SHAPE by County	LENGTH IN FEET	INSTALLATION COST PER FOOT	PIPE INSTALLATION COST (LENGTH * COST PER FT.)	PIPE INSTALLATION COST PER ROAD
1301	2025415	1202722	CHICOT RD	0+73	30" ARCH CONC	64.00			
1302	2024496	1202690	CHICOT RD	9+92	48" ARCH CONC	64.00			
1303	2022925	1202826	CHICOT RD	25+71	24" ARCH CONC	64.00			
1304	2021736	1202641	CHICOT RD	37+78	18" ARCH CONC	56.00			
1306	2020189	1202523	CHICOT RD	53+32	30" ARCH CONC	104.00			
1307	2018029	1202428	CHICOT RD	75+14	48" ARCH CONC	48.00			
1308	2017727	1202460	CHICOT RD	78+18	24" ARCH CONC	40.00			
1309	2015973	1202367	CHICOT RD	95+78	18" ARCH CONC	40.00			
1310	2015365	1202304	CHICOT RD	101+91	18" ARCH CONC	40.00			
1311	2014226	1202208	CHICOT RD	113+69	42" ARCH CONC	48.00			
1312	2011721	1201199	CHICOT RD	148+12	18" ARCH CONC	40.00			
1313	2010899	1201324	CHICOT RD	156+54	24" ARCH CONC	40.00			
1314	2005836	1202156	CHICOT RD	209+39	18" ARCH CONC	40.00			
1315	2005083	1201983	CHICOT RD	217+16	18" ARCH CONC	40.00			
1316	2003815	1201686	CHICOT RD	230+48	24" ARCH CONC	40.00			
1317	2003114	1201682	CHICOT RD	237+49	18" ARCH CONC	40.00			
1318	2002235	1201661	CHICOT RD	246+29	18" ARCH CONC	40.00			
1320	1999759	1201139	CHICOT RD	272+11	24" ARCH CONC	40.00			
1321	1999274	1200767	CHICOT RD	278+27	36" ARCH CONC	40.00			
1322	1998496	1200282	CHICOT RD	287+76	24" ARCH CONC	40.00			
1324	1996935	1199623	CHICOT RD	305+19	18" ARCH CONC	40.00			
1325	1996265	1199168	CHICOT RD	313+29	18" ARCH CONC	40.00			
1326	1995521	1198900	CHICOT RD	321+29	30" ARCH CONC	40.00			
1327	1994333	1198814	CHICOT RD	333+21	24" ARCH CONC	40.00			
1328	1992678	1197411	CHICOT RD	355+33	42" ARCH CONC	48.00			
1329	1991925	1197227	CHICOT RD	363+25	TWO 48" ARCH CONC	96.00			
1330	2020346	1193688	KLING RD	0+24	18" ARCH CONC	40.00			
1331	2020312	1195045	KLING RD	13+81	18" ARCH CONC	32.00			
1332	2020300	1195521	KLING RD	18+57	18" ARCH CONC	32.00			
1333	2020262	1196692	KLING RD	30+29	18" ARCH CONC	32.00			
1334	2020234	1197532	KLING RD	38+70	18" ARCH CONC	32.00			
1335	2020199	1198485	KLING RD	48+22	30" ARCH CONC	32.00			
1336	2020173	1199652	KLING RD	59+91	18" ARCH CONC	32.00			
1337	2020173	1200441	KLING RD	67+79	36" ARCH CONC	32.00			
1338	2020180	1201005	KLING RD	73+44	18" ARCH CONC	32.00			
1339	2020190	1201687	KLING RD	80+25	18" ARCH CONC	32.00			
1340	2020191	1202479	KLING RD	88+18	18" ARCH CONC	40.00			
1341	2016233	1193146	N. SARDIS RD	41+61	24" ARCH CONC.	40.00			
1342	2015068	1193320	N. SARDIS RD	53+56	24" ARCH CONC.	40.00			
1343	2014187	1193504	N. SARDIS RD	62+67	18" ARCH CONC.	40.00			
1344	2008321	1192472	N. SARDIS RD	122+54	24" ARCH CONC	48.00			
1345	2004383	1192397	N. SARDIS RD	161+92	18" ARCH CONC	32.00			
1346	2002721	1192983	N. SARDIS RD	180+81	30" ARCH CONC	40.00			
1347	2001666	1193671	N. SARDIS RD	194+12	24" ARCH CONC	40.00			
1348	2000614	1193808	N. SARDIS RD	204+92	36" ARCH CONC	40.00			
1349	1999686	1193877	N. SARDIS RD	215+05	24" ARCH CONC	40.00			
1350	1999110	1193428	N. SARDIS RD	222+38	24" ARCH CONC	40.00			
1352	2000219	1203454	W SAWMILL RD	20+64	36" ARCH CONC	40.00			
1353	2000335	1204268	W SAWMILL RD	28+86	30" ARCH CONC	40.00			
1354	2000358	1205550	W SAWMILL RD	41+71	18" ARCH CONC	40.00			
1356	2000317	1208414	W SAWMILL RD	70+35	42" ARCH CONC	40.00			
1357	2000273	1209669	W SAWMILL RD	82+91	18" ARCH CONC	40.00			
1358	1983970	1111767	GRAHAM RD	30+38	36" ARCH CONC.	40.00			
1360	1983391	1113774	GRAHAM RD	54+57	18" ARCH CONC	40.00			
1361	1982993	1114260	GRAHAM RD	61+26	18" ARCH CONC	40.00			
1362	1982069	1114522	GRAHAM RD	71+06	18" ARCH CONC	32.00			
1363	1981178	1114599	GRAHAM RD	80+72	18" ARCH CONC	32.00			
1364	1980759	1114762	GRAHAM RD	86+15	18" ARCH CONC	32.00			
1365	1994211	1085439	FAIRPLAY RD	15+57	24" ARCH CONC.	40.00			
1366	1993899	1085434	FAIRPLAY RD	18+69	18" ARCH CONC.	40.00			
1367	1991765	1085404	FAIRPLAY RD	40+45	18" ARCH CONC.	40.00			
1368	1988208	1086624	FAIRPLAY RD	81+60	TWO 42" ARCH CONC.	96.00			
1369	1992289	1084314	PLEASANT RUN RD	10+06	18" ARCH CONC.	32.00			
1370	1992302	1083566	PLEASANT RUN RD	17+53	24" ARCH CONC.	32.00			
1371	1992351	1082146	PLEASANT RUN RD	31+74	18" ARCH CONC.	32.00			
1372	1991324	1077938	PLEASANT RUN RD	77+65	18" ARCH CONC.	32.00			
1373	1990855	1076544	PLEASANT RUN RD	92+61	24" ARCH CONC.	32.00			
1374	1990912	1075328	PLEASANT RUN RD	104+78	18" ARCH CONC.	32.00			
1375	1991167	1074232	PLEASANT RUN RD	115+89	36" ARCH CONC.	32.00			
1376	1996906	1080498	TEN MILE RD	13+71	30" ARCH CONC.	32.00			
1377	1994289	1081412	TEN MILE RD	44+40	24" ARCH CONC.	32.00			
1378	1993407	1081361	TEN MILE RD	53+24	24" ARCH CONC.	32.00			
1379	1992954	1081340	TEN MILE RD	57+79	24" ARCH CONC.	32.00			
1380	1990933	1081303	TEN MILE RD	78+01	18" ARCH CONC.	32.00			

\* NORTH AND EAST REFERS TO ARKANSAS  
SOUTH ZONE STATE PLANE COORDINATE  
AS USED WITH THE COUNTY WIDE  
GEOGRAPHIC INFORMATION SYSTEM, GIS

REVISIONS:

SALINE COUNTY ROAD  
DEPARTMENT

2000 U STREET  
BENTON, AR 72015

SOUTH SALINE COUNTY  
STORM PIPE REPLACEMENT/  
INSTALLATION SCHEDULE  
AND COST WORK SHEET

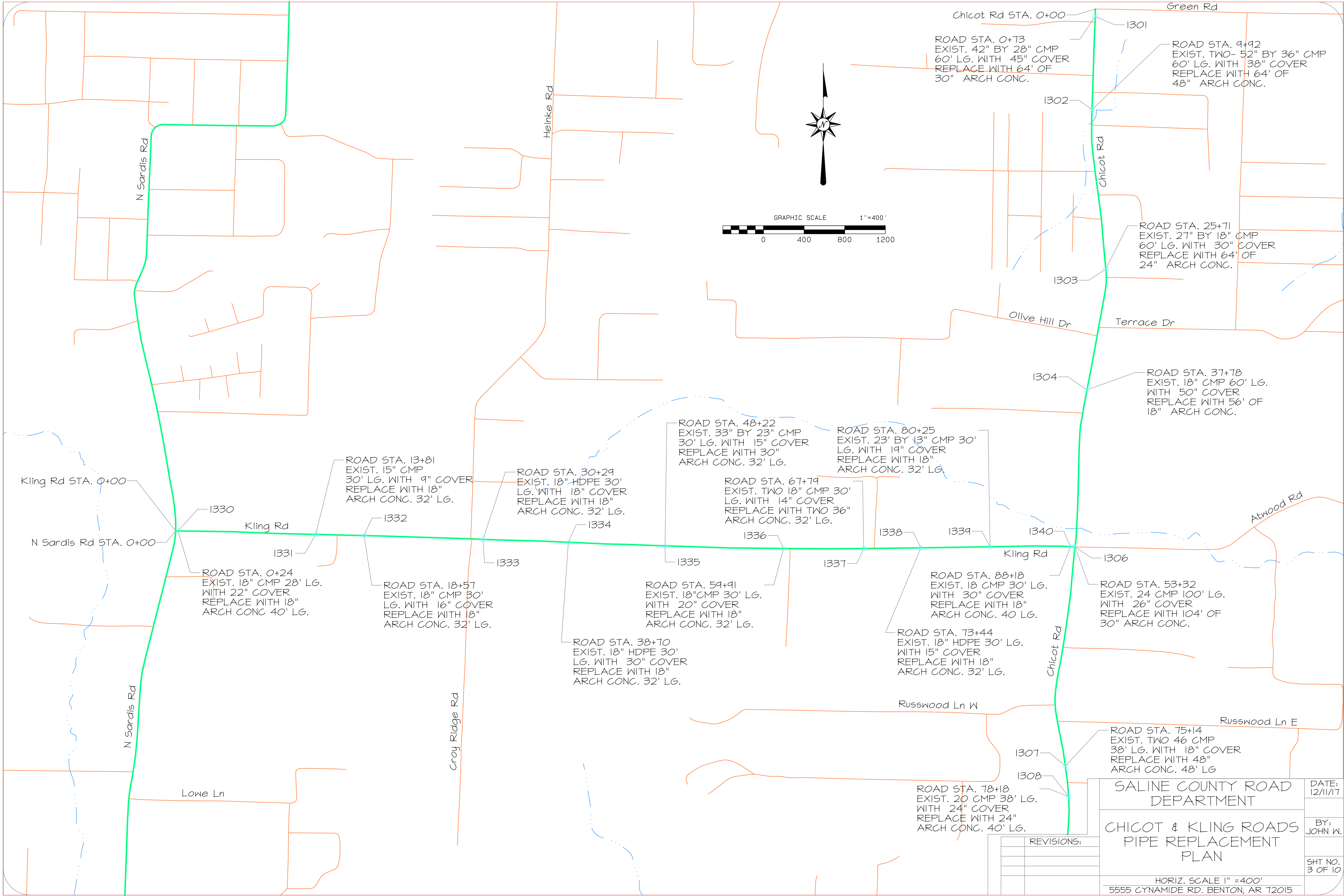
HORIZ. SCALE

DATE:  
12/11/17

DRAWN BY:  
JOHN W.

SHEET NO.  
2 OF 10





ROAD STA. 0+73  
EXIST. 42" BY 28" CMP  
60' LG. WITH 45" COVER  
REPLACE WITH 64" OF  
30" ARCH CONC.

ROAD STA. 9+92  
EXIST. TWO- 52" BY 36" CMP  
60' LG. WITH 38" COVER  
REPLACE WITH 64' OF  
48" ARCH CONC.

ROAD STA. 25+71  
EXIST. 27" BY 18" CMP  
60' LG. WITH 30" COVER  
REPLACE WITH 64' OF  
24" ARCH CONC.

ROAD STA. 37+78  
EXIST. 18" CMP 60' LG.  
WITH 50" COVER  
REPLACE WITH 56' OF  
18" ARCH CONC.

ROAD STA. 48+22  
EXIST. 33" BY 23" CMP  
30' LG. WITH 15" COVER  
REPLACE WITH 30"  
ARCH CONC. 32' LG.

ROAD STA. 80+25  
EXIST. 23" BY 13" CMP 30'  
LG. WITH 19" COVER  
REPLACE WITH 18"  
ARCH CONC. 32' LG.

ROAD STA. 67+79  
EXIST. TWO 18" CMP 30'  
LG. WITH 14" COVER  
REPLACE WITH TWO 36"  
ARCH CONC. 32' LG.

ROAD STA. 59+91  
EXIST. 18" CMP 30' LG.  
WITH 20" COVER  
REPLACE WITH 18"  
ARCH CONC. 32' LG.

ROAD STA. 38+70  
EXIST. 18" HDPE 30'  
LG. WITH 30" COVER  
REPLACE WITH 18"  
ARCH CONC. 32' LG.

ROAD STA. 88+18  
EXIST. 18 CMP 30' LG.  
WITH 30" COVER  
REPLACE WITH 18"  
ARCH CONC. 40 LG.

ROAD STA. 73+44  
EXIST. 18" HDPE 30' LG.  
WITH 15" COVER  
REPLACE WITH 18"  
ARCH CONC. 32' LG.

ROAD STA. 53+32  
EXIST. 24 CMP 100' LG.  
WITH 26" COVER  
REPLACE WITH 104' OF  
30" ARCH CONC.

ROAD STA. 75+14  
EXIST. TWO 46 CMP  
38' LG. WITH 18" COVER  
REPLACE WITH 48"  
ARCH CONC. 48' LG

ROAD STA. 78+18  
EXIST. 20 CMP 38' LG.  
WITH 24" COVER  
REPLACE WITH 24"  
ARCH CONC. 40' LG.

ROAD STA. 13+81  
EXIST. 15" CMP  
30' LG. WITH 9" COVER  
REPLACE WITH 18"  
ARCH CONC. 32' LG.

ROAD STA. 30+29  
EXIST. 18" HDPE 30'  
LG. WITH 18" COVER  
REPLACE WITH 18"  
ARCH CONC. 32' LG.

ROAD STA. 18+57  
EXIST. 18" CMP 30'  
LG. WITH 16" COVER  
REPLACE WITH 18"  
ARCH CONC. 32' LG.

ROAD STA. 0+24  
EXIST. 18" CMP 28' LG.  
WITH 22" COVER  
REPLACE WITH 18"  
ARCH CONC 40' LG.

SALINE COUNTY ROAD  
DEPARTMENT  
CHICOT & KLING ROADS  
PIPE REPLACEMENT  
PLAN

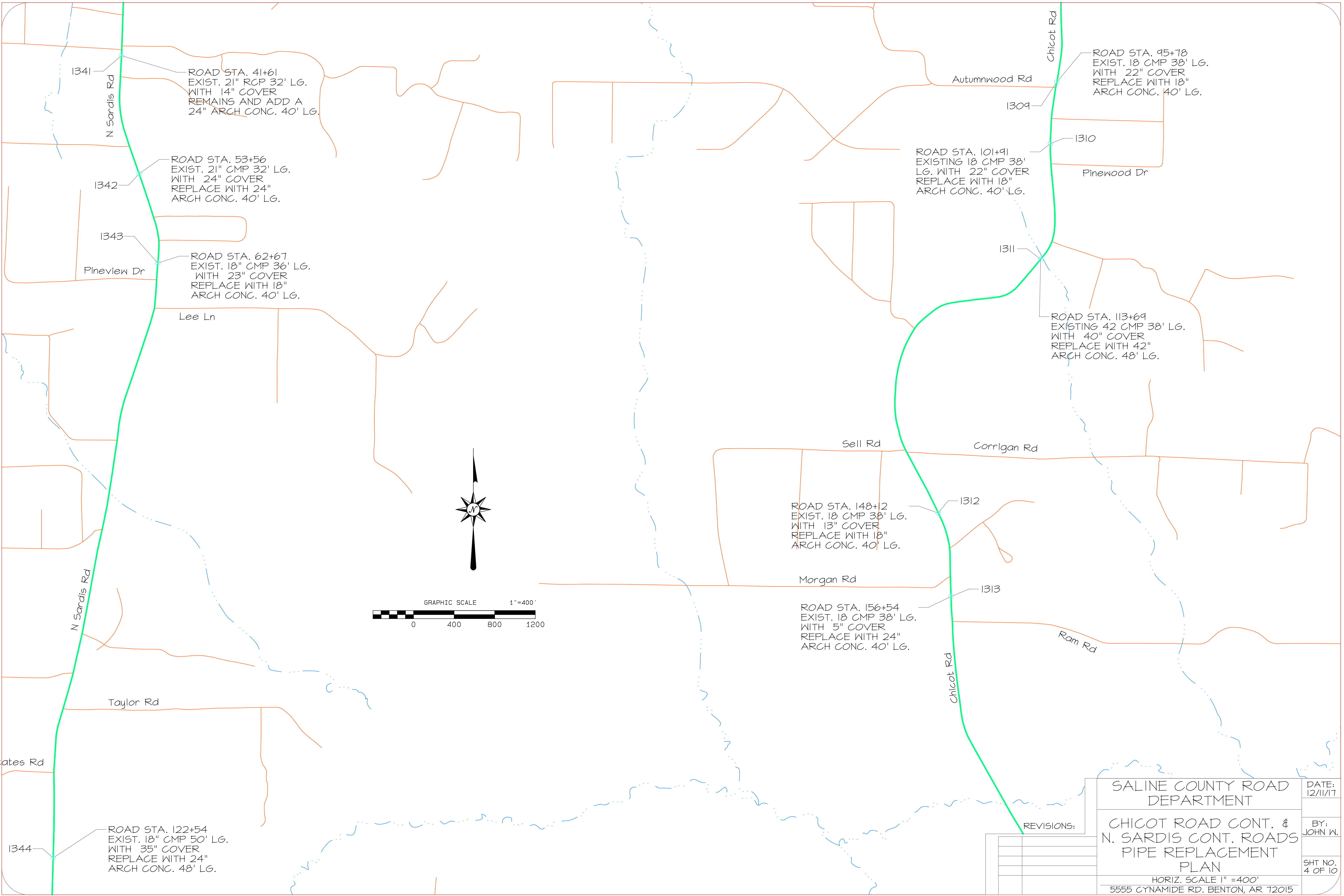
DATE:  
12/11/17

BY:  
JOHN W.

SHT NO.  
3 OF 10

HORIZ. SCALE 1" = 400'  
5555 CYNAMIDE RD. BENTON, AR 72015

REVISIONS:



1341  
ROAD STA. 41+61  
EXIST. 21" RCP 32' LG.  
WITH 14" COVER  
REMAINS AND ADD A  
24" ARCH CONC. 40' LG.

1342  
ROAD STA. 53+56  
EXIST. 21" CMP 32' LG.  
WITH 24" COVER  
REPLACE WITH 24" ARCH CONC. 40' LG.

1343  
Pineview Dr  
ROAD STA. 62+67  
EXIST. 18" CMP 36' LG.  
WITH 23" COVER  
REPLACE WITH 18" ARCH CONC. 40' LG.

Autumnwood Rd  
1309  
ROAD STA. 95+78  
EXIST. 18 CMP 38' LG.  
WITH 22" COVER  
REPLACE WITH 18" ARCH CONC. 40' LG.

1310  
ROAD STA. 101+91  
EXISTING 18 CMP 38' LG. WITH 22" COVER  
REPLACE WITH 18" ARCH CONC. 40' LG.

1311  
ROAD STA. 113+69  
EXISTING 42 CMP 38' LG.  
WITH 40" COVER  
REPLACE WITH 42" ARCH CONC. 48' LG.

1312  
ROAD STA. 148+2  
EXIST. 18 CMP 38' LG.  
WITH 13" COVER  
REPLACE WITH 18" ARCH CONC. 40' LG.

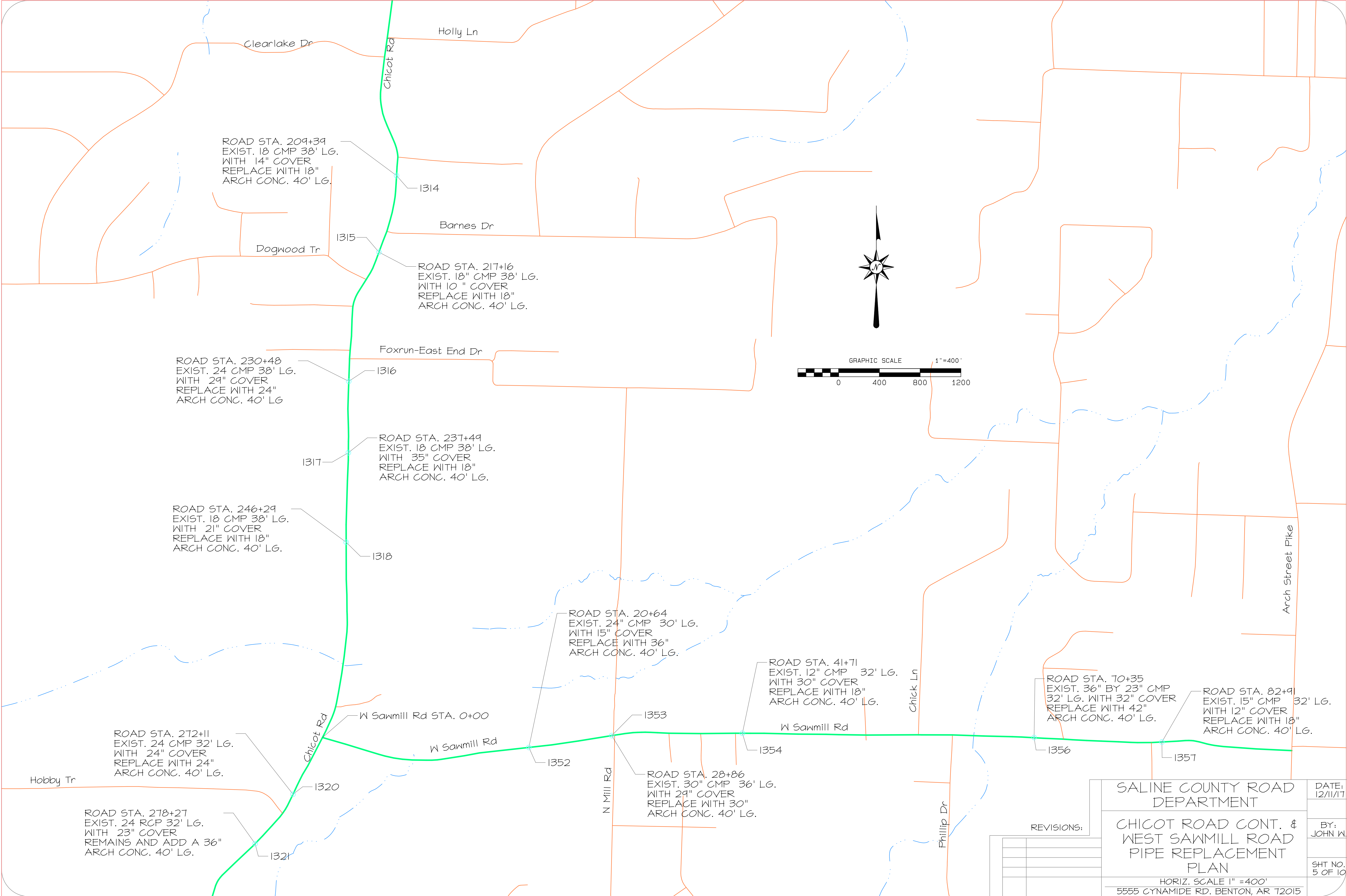
1313  
ROAD STA. 156+54  
EXIST. 18 CMP 38' LG.  
WITH 5" COVER  
REPLACE WITH 24" ARCH CONC. 40' LG.

1344  
ROAD STA. 122+54  
EXIST. 18" CMP 50' LG.  
WITH 35" COVER  
REPLACE WITH 24" ARCH CONC. 48' LG.

REVISIONS:


SALINE COUNTY ROAD DEPARTMENT		DATE: 12/11/17
CHICOT ROAD CONT. & N. SARDIS CONT. ROADS PIPE REPLACEMENT PLAN		BY: JOHN W.
HORIZ. SCALE 1" = 400'		SHT NO. 4 OF 10
5555 CYNAMIDE RD. BENTON, AR 72015		





ROAD STA. 209+39  
EXIST. 18" CMP 38' LG.  
WITH 14" COVER  
REPLACE WITH 18"  
ARCH CONC. 40' LG.

ROAD STA. 217+16  
EXIST. 18" CMP 38' LG.  
WITH 10" COVER  
REPLACE WITH 18"  
ARCH CONC. 40' LG.

ROAD STA. 230+48  
EXIST. 24" CMP 38' LG.  
WITH 29" COVER  
REPLACE WITH 24"  
ARCH CONC. 40' LG.

ROAD STA. 237+49  
EXIST. 18" CMP 38' LG.  
WITH 35" COVER  
REPLACE WITH 18"  
ARCH CONC. 40' LG.

ROAD STA. 246+29  
EXIST. 18" CMP 38' LG.  
WITH 21" COVER  
REPLACE WITH 18"  
ARCH CONC. 40' LG.

ROAD STA. 20+64  
EXIST. 24" CMP 30' LG.  
WITH 15" COVER  
REPLACE WITH 36"  
ARCH CONC. 40' LG.

ROAD STA. 41+71  
EXIST. 12" CMP 32' LG.  
WITH 30" COVER  
REPLACE WITH 18"  
ARCH CONC. 40' LG.

ROAD STA. 70+35  
EXIST. 36" BY 23" CMP  
32' LG. WITH 32" COVER  
REPLACE WITH 42"  
ARCH CONC. 40' LG.

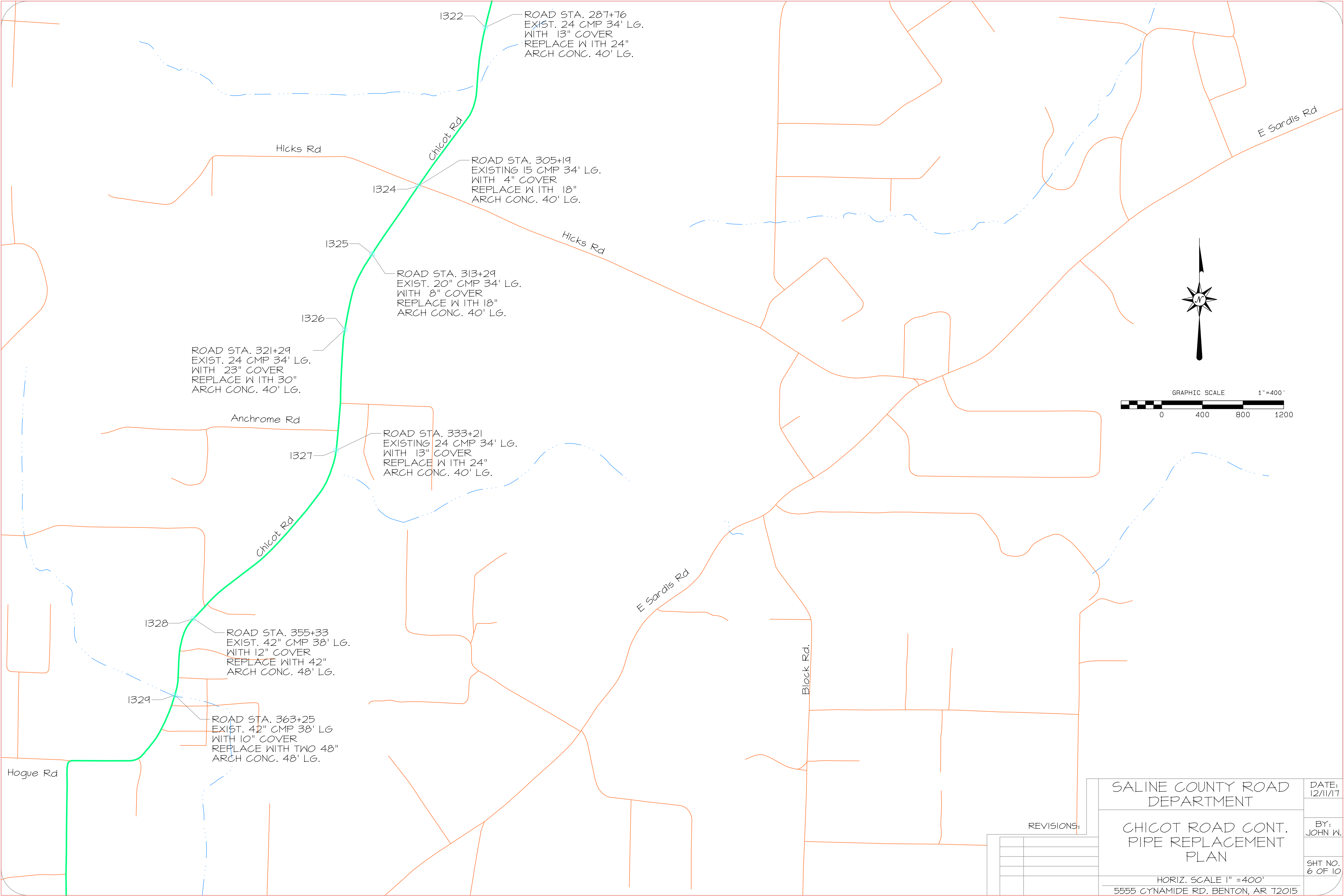
ROAD STA. 82+91  
EXIST. 15" CMP 32' LG.  
WITH 12" COVER  
REPLACE WITH 18"  
ARCH CONC. 40' LG.

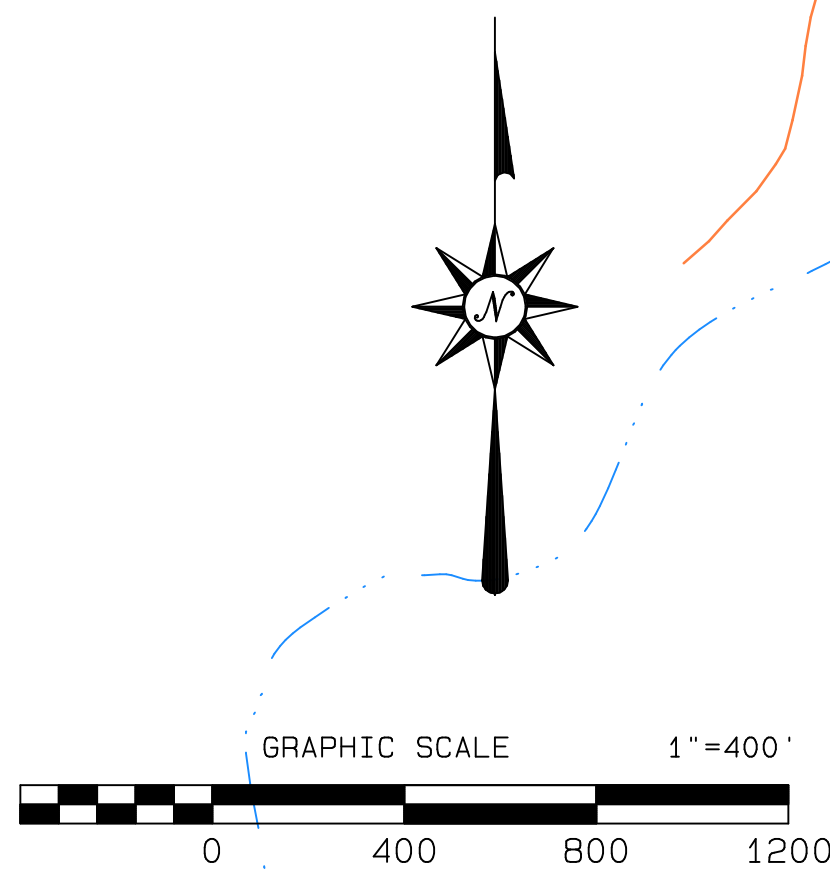
ROAD STA. 272+11  
EXIST. 24" RCP 32' LG.  
WITH 24" COVER  
REPLACE WITH 24"  
ARCH CONC. 40' LG.

ROAD STA. 278+27  
EXIST. 24" RCP 32' LG.  
REMAINS AND ADD A 36"  
ARCH CONC. 40' LG.

ROAD STA. 28+86  
EXIST. 30" CMP 36' LG.  
WITH 29" COVER  
REPLACE WITH 30"  
ARCH CONC. 40' LG.

REVISIONS:	SALINE COUNTY ROAD DEPARTMENT		DATE: 12/11/17
	CHICOT ROAD CONT. & WEST SAWMILL ROAD PIPE REPLACEMENT PLAN		BY: JOHN W.
	HORIZ. SCALE 1" = 400'		SHT NO. 5 OF 10
	5555 CYNAMIDE RD. BENTON, AR 72015		





1345  
ROAD STA. 161+92  
EXIST. 15" CMP 28' LG.  
WITH 24" COVER  
REPLACE WITH 18"  
ARCH CONC. 32' LG.

Wilder Rd

N Sardis Rd

1346  
ROAD STA. 180+81  
EXIST. 18" CMP 38' LG.  
WITH 56" COVER  
REPLACE WITH 30"  
ARCH CONC. 40' LG.

Bluebird-Sardis Ln

McPherson Rd

1347  
ROAD STA. 194+12  
EXIST. 18" CMP 38' LG.  
WITH 18" COVER  
REPLACE WITH 24"  
ARCH CONC. 40' LG.

1348  
ROAD STA. 204+92  
EXIST. 36" CMP 37' LG.  
WITH 15" COVER  
REPLACE WITH 36"  
ARCH CONC. 40' LG.

Bradbury Ln

1349  
ROAD STA. 222+38  
EXIST. 24" CMP 32' LG.  
WITH 28" COVER  
REPLACE WITH 24"  
ARCH CONC. 40' LG.

1350  
ROAD STA. 215+05  
EXIST. 24" CMP 32' LG.  
WITH 14" COVER  
REPLACE WITH 24"  
ARCH CONC. 40' LG.

Donna Ln

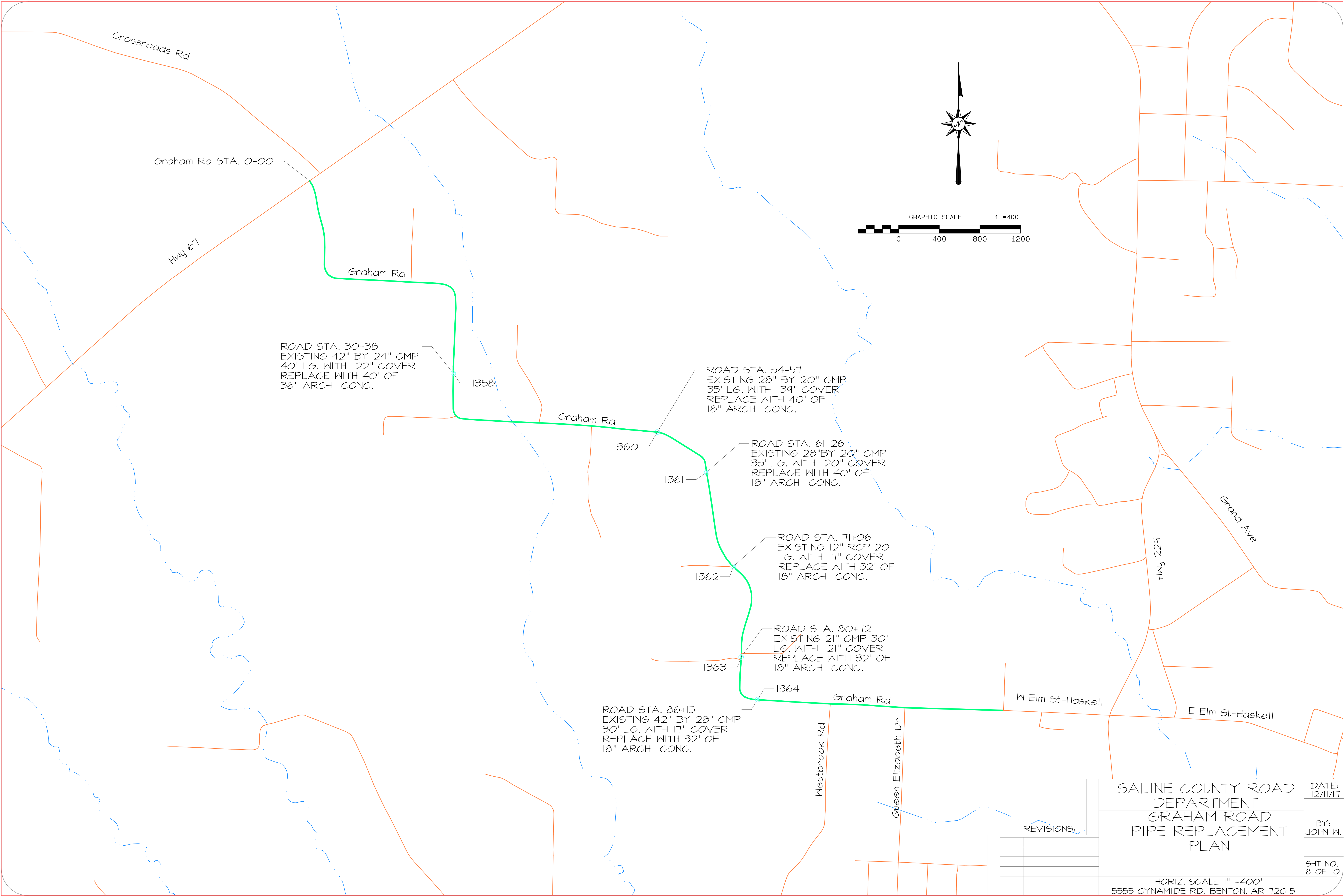
N Sardis Rd

Styles Rd

REVISIONS:	

SALINE COUNTY ROAD DEPARTMENT  N. SARDIS ROAD CONT. PIPE REPLACEMENT PLAN  HORIZ. SCALE 1" = 400' 5555 CYNAMIDE RD. BENTON, AR 72015	DATE: 12/11/17
	BY: JOHN W.
	SHT NO. 7 OF 10





REVISIONS:


SALINE COUNTY ROAD  
DEPARTMENT  
GRAHAM ROAD  
PIPE REPLACEMENT  
PLAN

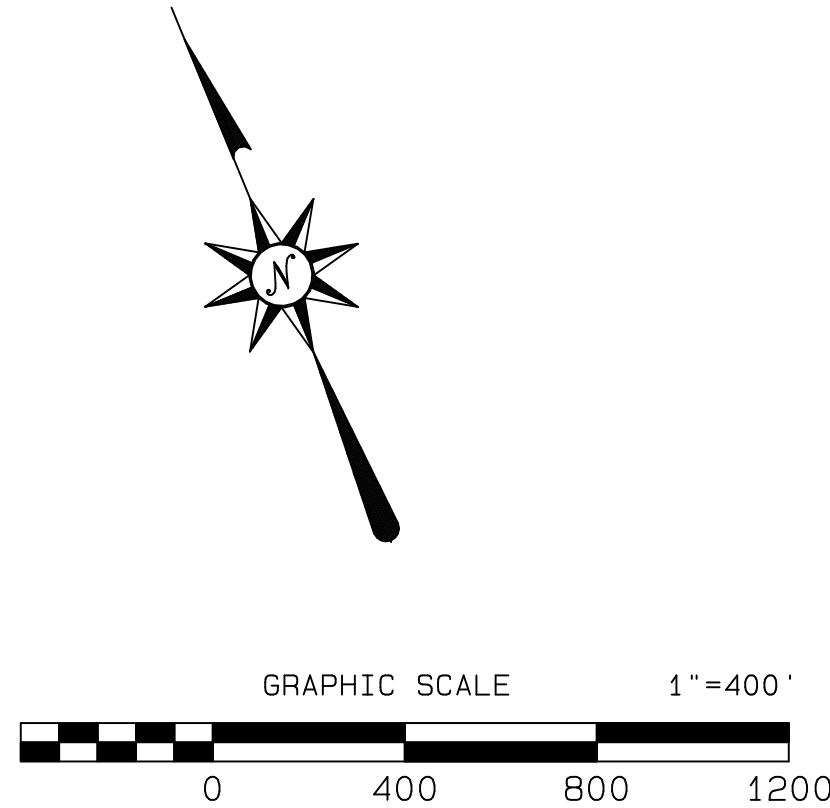
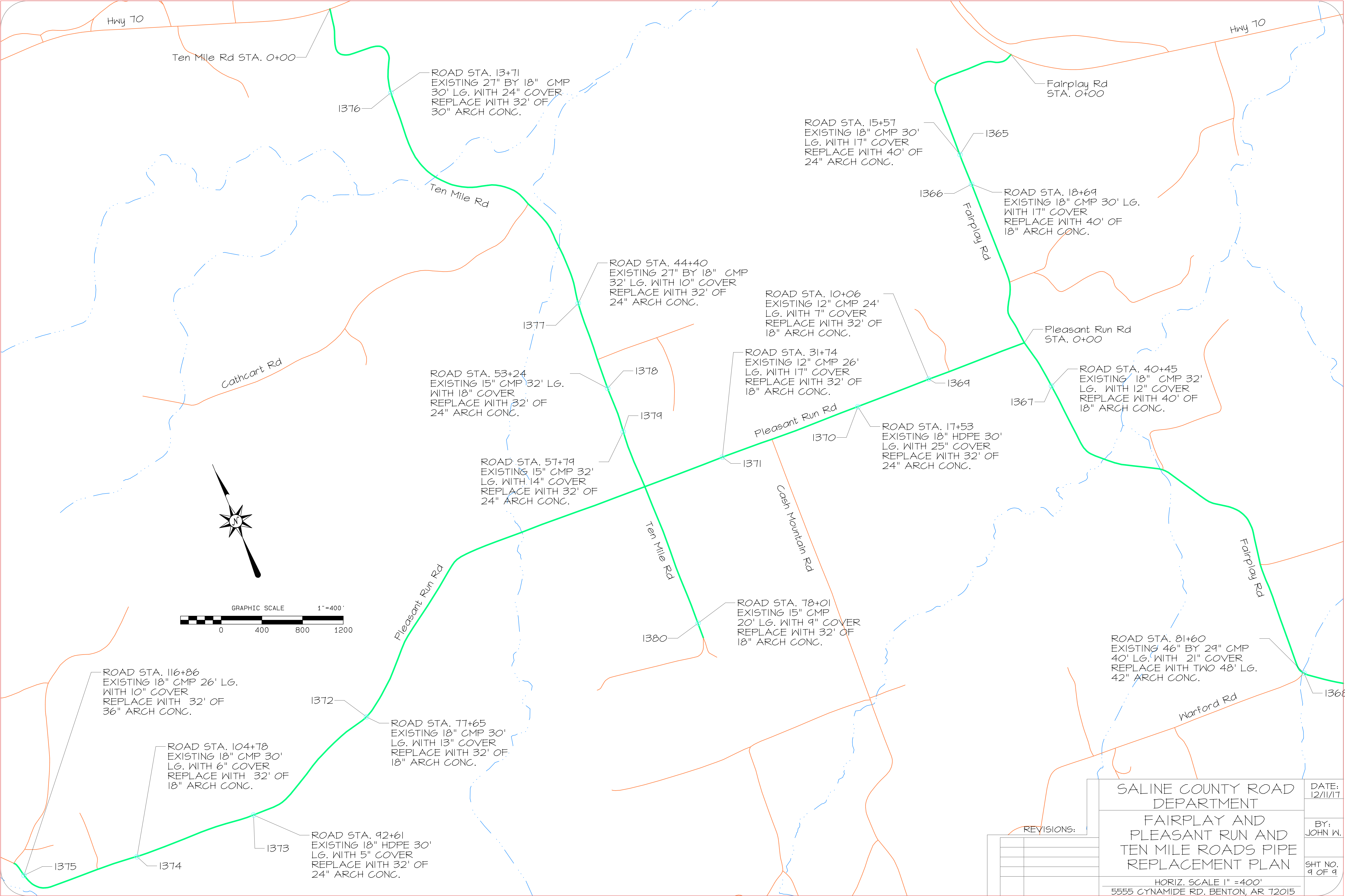
HORIZ. SCALE 1" = 400'  
5555 CYNAMIDE RD. BENTON, AR 72015

DATE:  
12/11/17

BY:  
JOHN W.

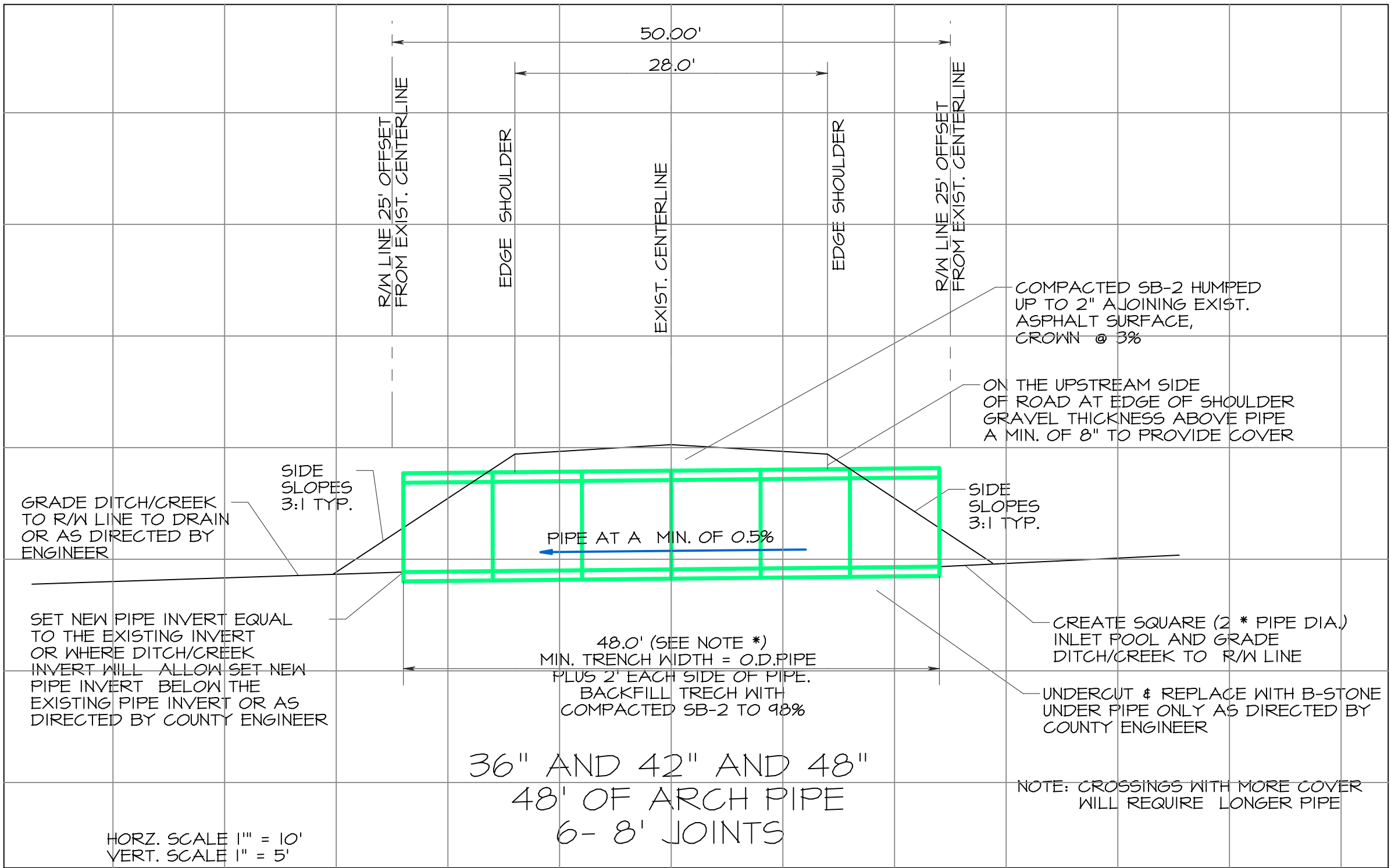
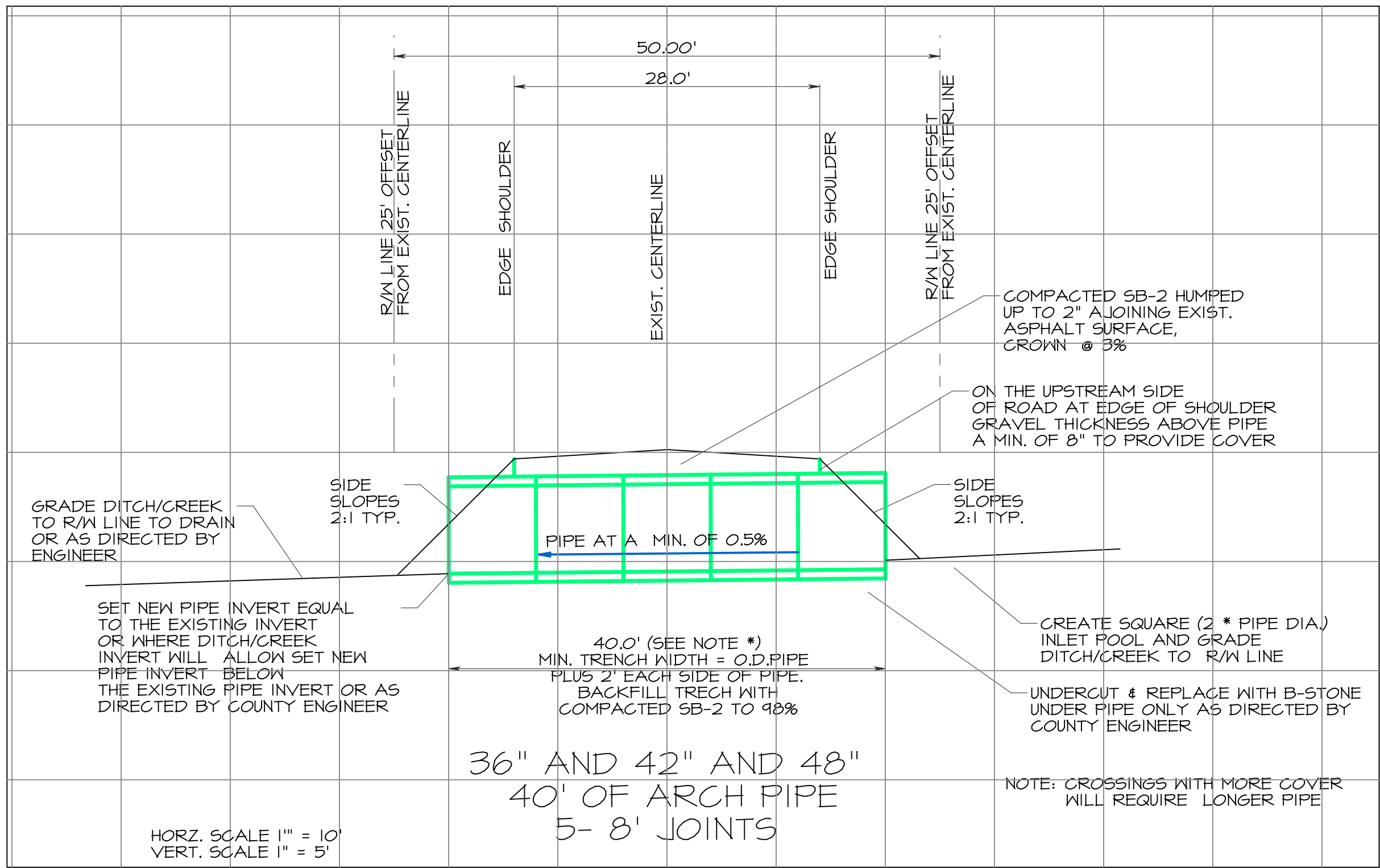
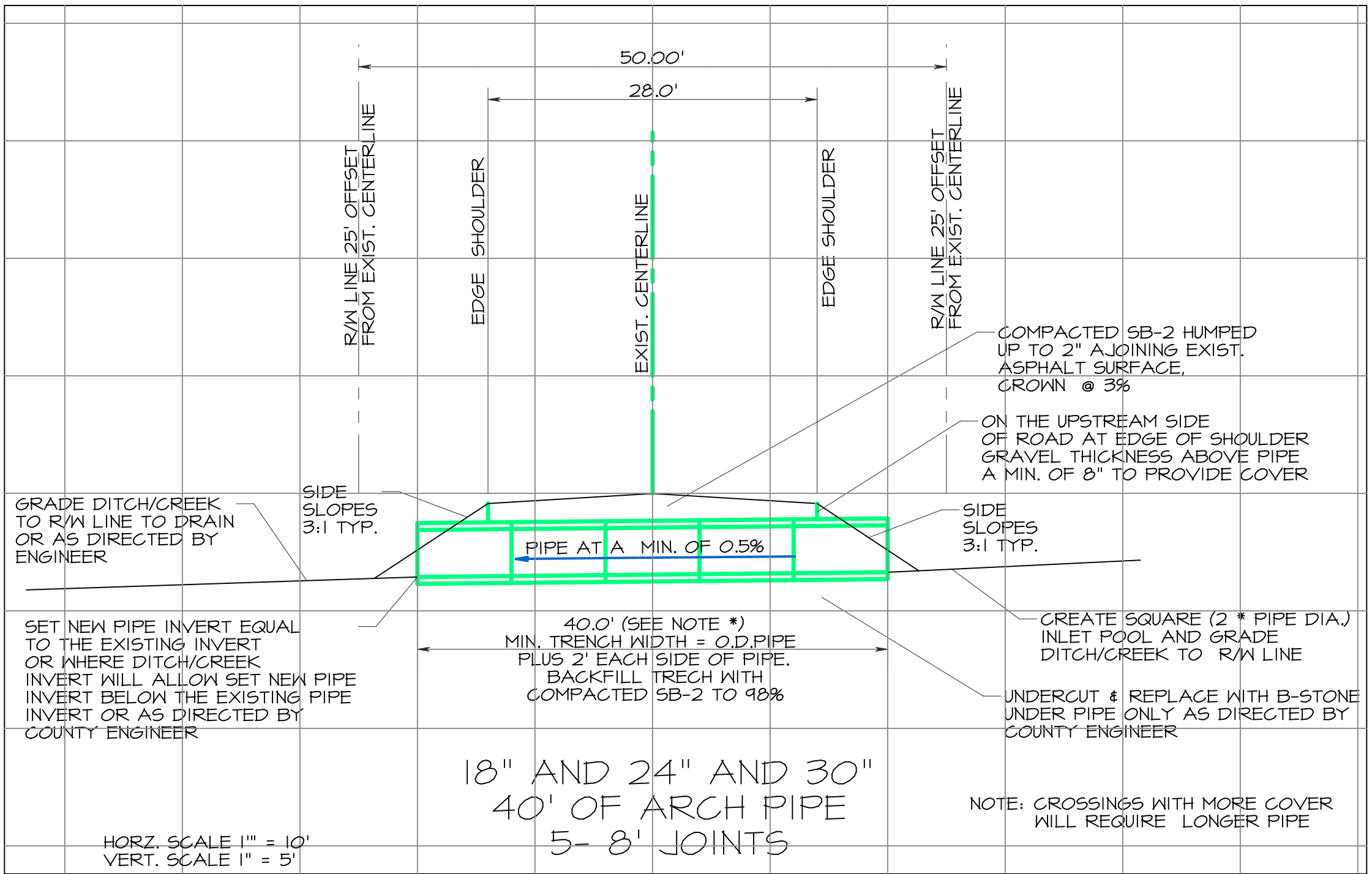
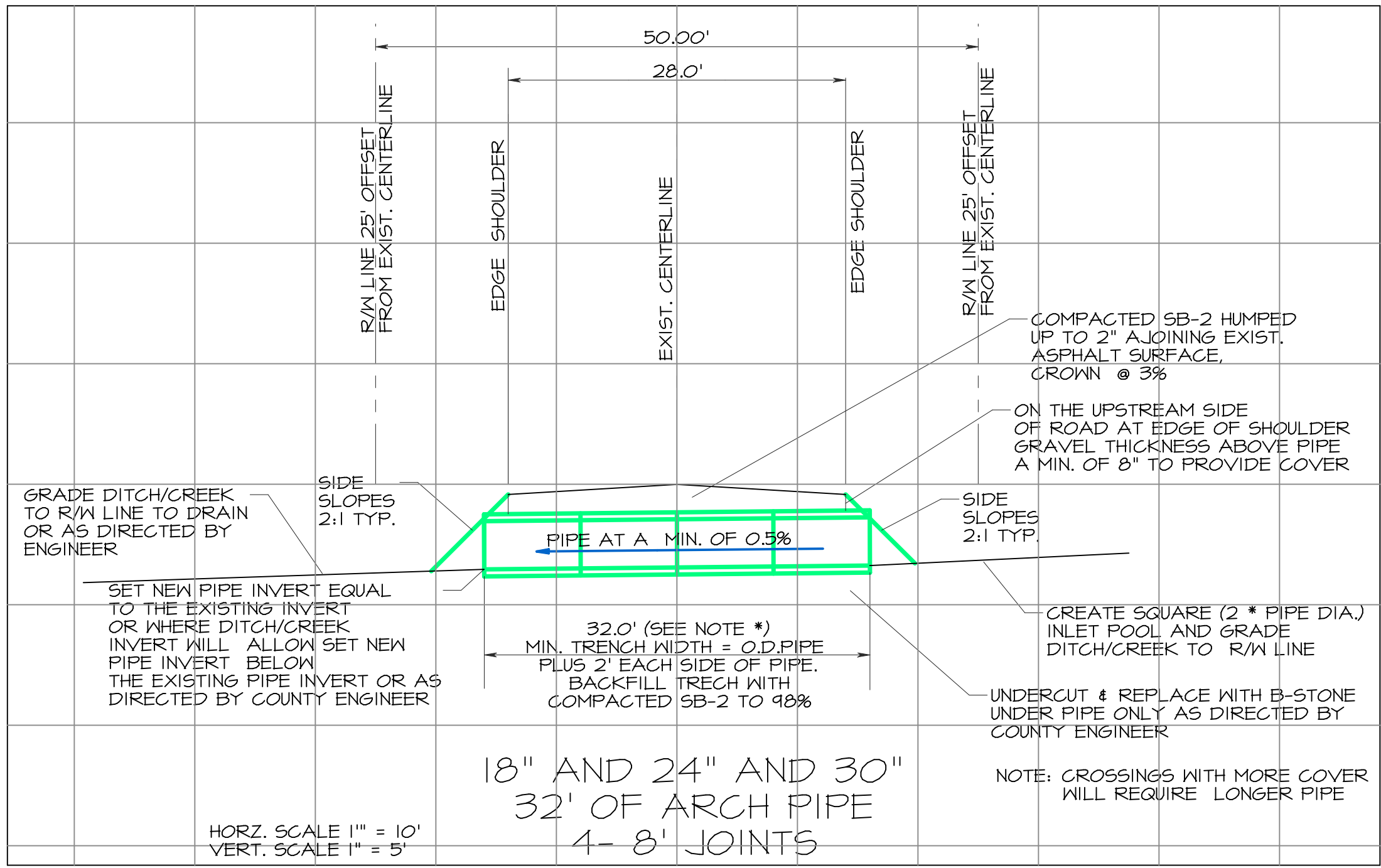
SHT NO.  
8 OF 10





REVISIONS:	SALINE COUNTY ROAD DEPARTMENT		DATE: 12/11/17
	FAIRPLAY AND PLEASANT RUN AND TEN MILE ROADS PIPE REPLACEMENT PLAN		BY: JOHN W.
	HORIZ. SCALE 1" = 400'		SHT NO. 9 OF 9
	5555 CYNAMIDE RD. BENTON, AR 72015		





REVISIONS:


SALINE COUNTY ROAD  
DEPARTMENT

TYPICAL SECTIONS FOR  
PIPE REPLACEMENTS  
SOUTH SALINE COUNTY  
ROADS

HORIZ. SCALE: AS SHOWN  
5555 CYNAMIDE RD. BENTON, AR 72015

DATE:  
12/11/17

BY:  
JOHN W.

SHEET NO.  
10 OF 10